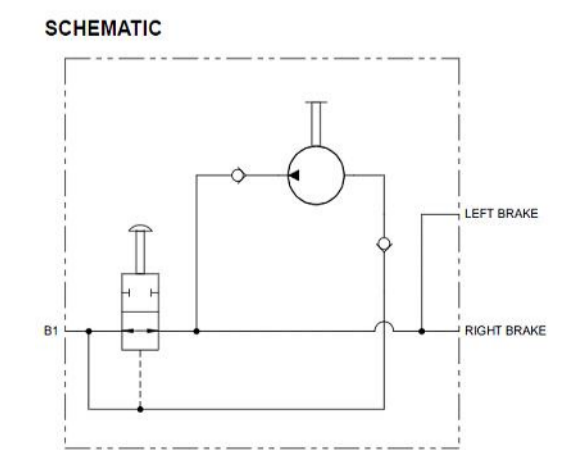


Specifications:
 1. Typical output flow 1 cm³ [.06 in³] - 2 cm³ [.12 in³] per stroke depending upon oil viscosity, speed of stroke, and pressure.
 2. Maximum working pressure of 276 bar [4000 psi].

A: FITTING OR PORT
 7/16-20 UNF PORT
 ▽11.5[.45]MIN.

B: Through Mounting Holes
 3/8-16 UNC

Painting: No paint



IF THE SURFACES ARE PAINTED, THEN A NOMINAL 0.13MM NEEDS TO BE ADDED.
 TOLERANCE FOR BASIC DIMENSIONS = ± 1MM (.04 INCH)

LAB OFFICE	UNIT	DATE	ISSUES BY	RAW MATERIAL SPECIFICATION
	MM(INCH)	2023-01-05	13co	
THE REPRODUCTION, DISTRIBUTION AND UTILIZATION OF THIS DOCUMENT AS WELL AS THE COMMUNICATION OF ITS CONTENTS TO OTHERS WITHOUT EXPLICIT AUTHORIZATION IS PROHIBITED. OFFENDERS WILL BE HELD LIABLE FOR THE PAYMENT OF DAMAGES. ALL RIGHTS RESERVED IN THE EVENT OF THE GRANT OF A PATENT, UTILITY MODEL OR DESIGN. (PER ISO 16016)				DRAWING INTERPRETATION PER 504H0074 MATERIAL DRAWING TITLE HRP020A10AAAAP
			SCALE: 1:500 SHEET 1 OF 1	PART NO